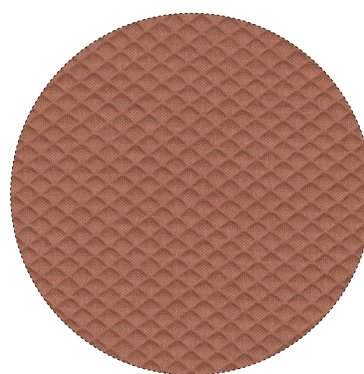
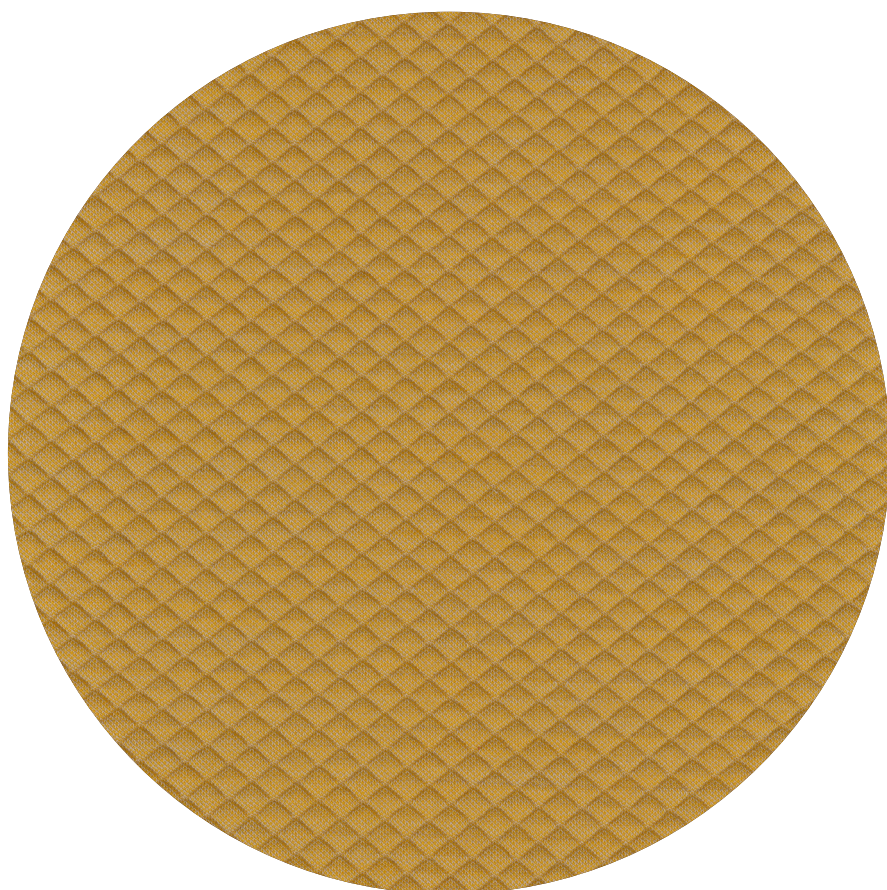
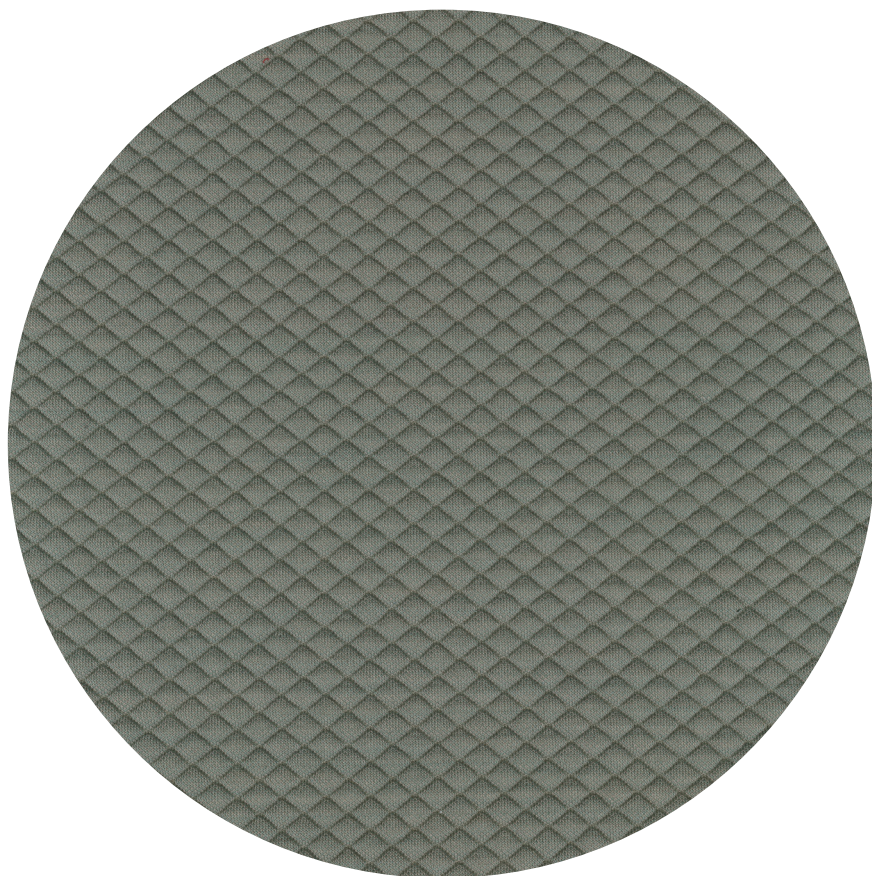


MOSAIC 2

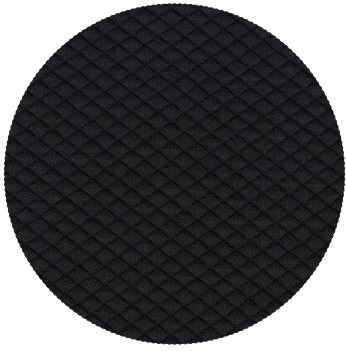


**SANCAL** 

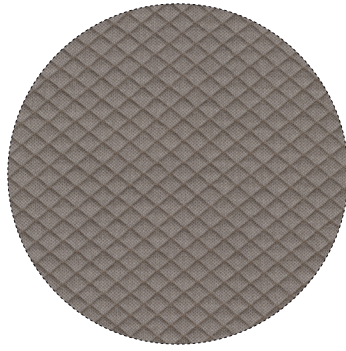


0922

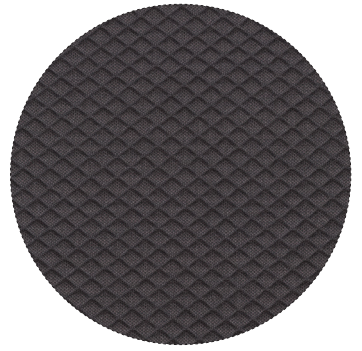




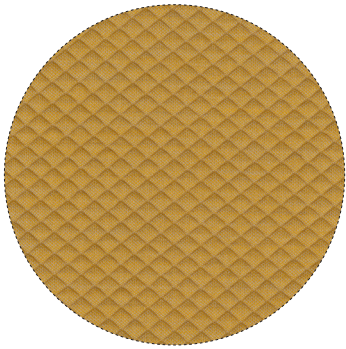
0182



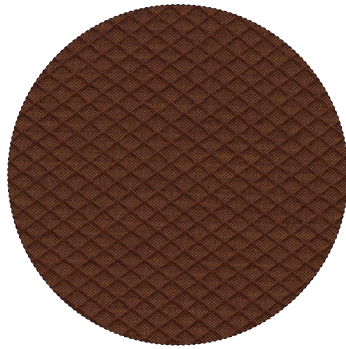
0222



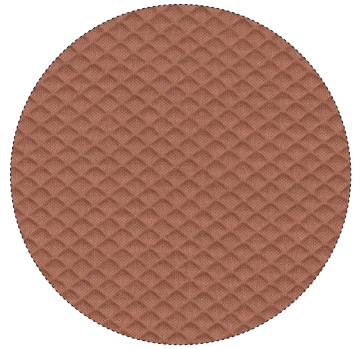
0262



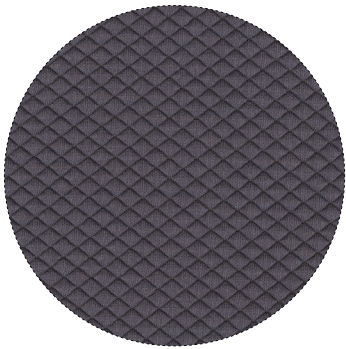
0422



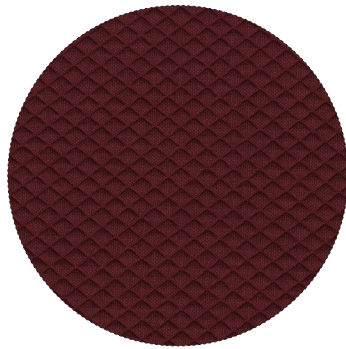
0472



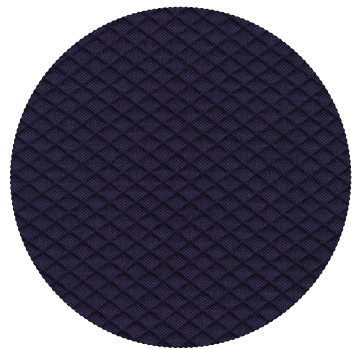
0532



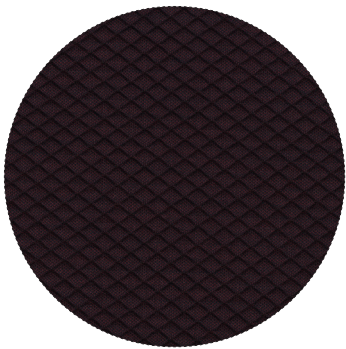
0642



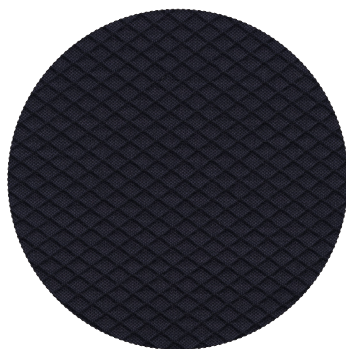
0662



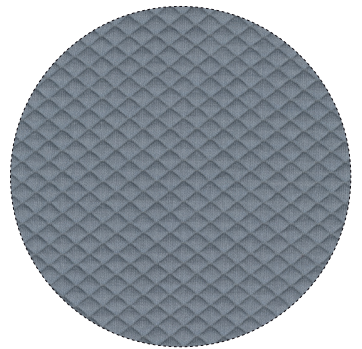
0672



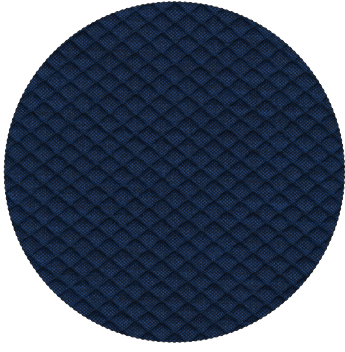
0682



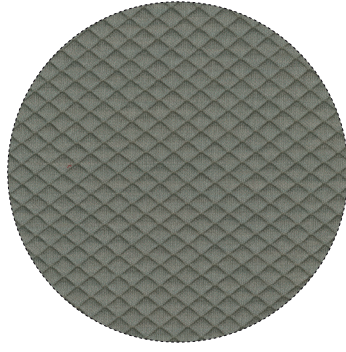
0692



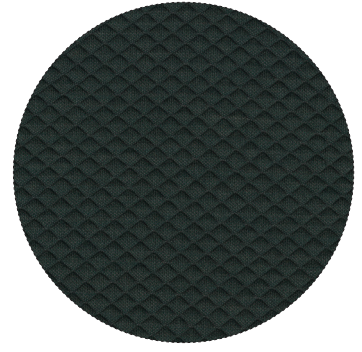
0722



0772



0922




0972



# MOSAIC 2

## FABRICS TEJIDOS

Composition Composición		46% PL FILLING, 27% WO, 12% PL, 9% NY, 6% EA
Weight Peso		1080 gr/ml
Minimum usable width Ancho		140 cm
Abrasion (martindale) Resistencia a la abrasión		100.000  EN ISO 12947
Pilling resistance Resistencia al pilling		4-5  EN ISO 12945
Flame resistance Resistencia al fuego	Cigarette test Cigarrillo	Pass Pasa BS 5852 source 0 / ISO EN 1021-1
	Match test Cerilla	Pass Pasa BS 5852 source 1 / ISO EN 1021-2
	California Technical Bulletin	Pass Pasa TB 117
Lightfastness Solidez a la luz		6-7 ISO 105-B02
Colour fastness to rubbing Solidez al frote		4-5 EN ISO 105-X12
Resistance to putrefaction Resistencia a la putrefacción		-
Cleaning advise (loose covers) Condiciones de lavado		

### Important

Key information about how different materials behave, and how they should be cared for can be found at <https://sancal.com/care>

Surface clean any liquids by dabbing with a damp cloth immediately after spillage to minimise soiling. Never rub.

Check the technical specification sheet to see if the cover can be removed from your product by visiting <https://sancal.com/technical>

If you remove the cover, attach a protective cloth to the fastening strips to avoid damaging the fabric.

### Importante

Información clave sobre el comportamiento de los diferentes materiales que empleamos y su conservación está disponible en: <https://sancal.com/care>

Limpie los líquidos con un trapo húmedo inmediatamente después del derrame para minimizar daños. No frote el textil.

Compruebe la hoja de características técnicas para saber si su producto es desenfundable <https://sancal.com/tecnicos>

Si decide desenfundar su producto, coloque una tela protectora sobre las cintas de sujeción para evitar daños en la tapicería.



[www.sancal.com/care](https://www.sancal.com/care)  
REF 19007\_ carpetilla\_Atlas

**SANCAL** 